

Preparation	2
Purchase of a measurement microphone	2
Network connection	2
Checking the speaker specifications	2
Securing a walking route	2
Downloading the App	3
Using Room EQ	4
Environment settings	4
Setting the measurement microphone	5
Before starting measurement	6
Measurement	6
Supported Models and Update History	7
Supported models	7
Update history	7

Preparation

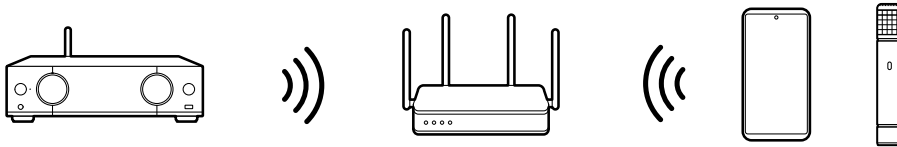
Preparation is required to make a correct measurement using Room EQ. Check the following and start the measurement.

Purchase of a measurement microphone

When a mobile device of Android OS is used, a separately sold measurement microphone is required. For the purchase of the microphone, [see here](#).
On an iOS mobile device, both the built-in microphone and the measurement microphone can be used.

Network connection

Measurement with Room EQ is made via a network. Connect the main unit, mobile device, and measurement microphone (→p5) to the same network.

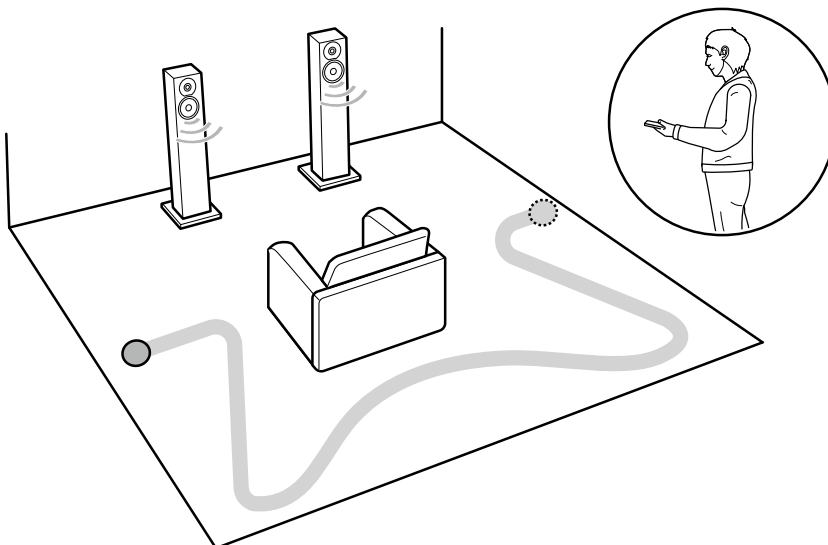


Checking the speaker specifications

Enter the speaker information in the Room EQ settings. Confirm the frequency characteristic of the speakers to be used beforehand. The information is described in the instruction manual in many cases. e.g., 20 Hz to 20 kHz, 35 Hz to 100 kHz, etc.


Securing a walking route

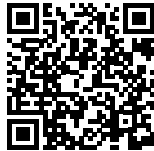
To check the acoustic characteristics in the room, you will move in the room during measurement while carrying the mobile device or microphone. Secure a safe walking route to prevent an accident.



Downloading the App

1. Download Onkyo Room EQ onto the mobile device.

Onkyo Room EQ | 



<https://apps.apple.com/us/app/onkyo-room-eq/id6756758997>



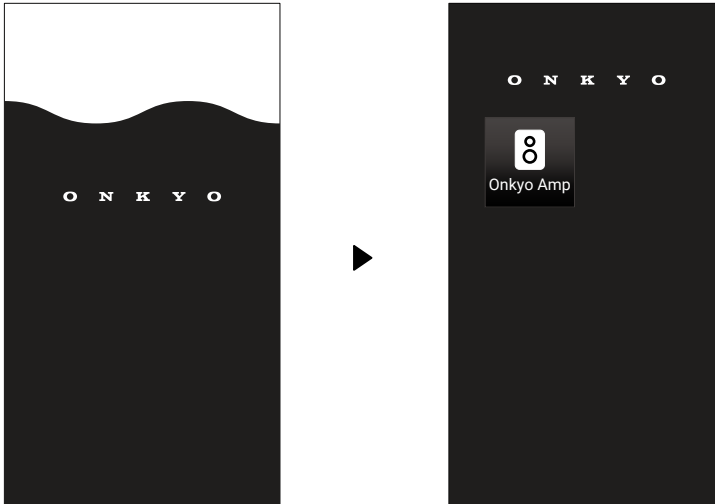
<https://play.google.com/store/apps/details?id=com.hansong.onkyo>



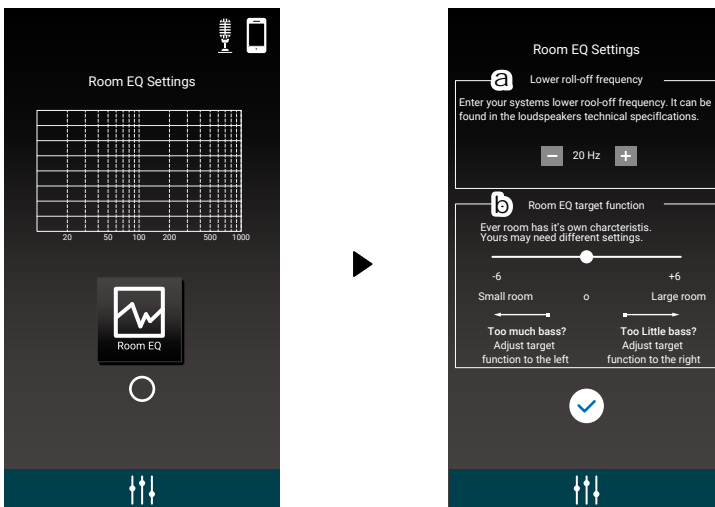
Using Room EQ

Environment settings

1. Start up Onkyo Room EQ.
A short time later, a supported device is displayed. Tap and select it.



2. Tap the equalizer icon.
3. Tap the Room EQ icon.
4. Set a roll-off frequency. (a)
Set a lower value of speaker frequency characteristic.
 - Select a value between "10.0 Hz" and "200 Hz" (in 5 Hz increments). If the same value does not exist, select a value one level higher. For example, when using a speaker with a frequency characteristic starting 37 Hz, select "40 Hz".
5. Select a strength of bass sound. (b)
 - Select a value between "-6" and "+6".
6. Tap the check mark to save the settings.

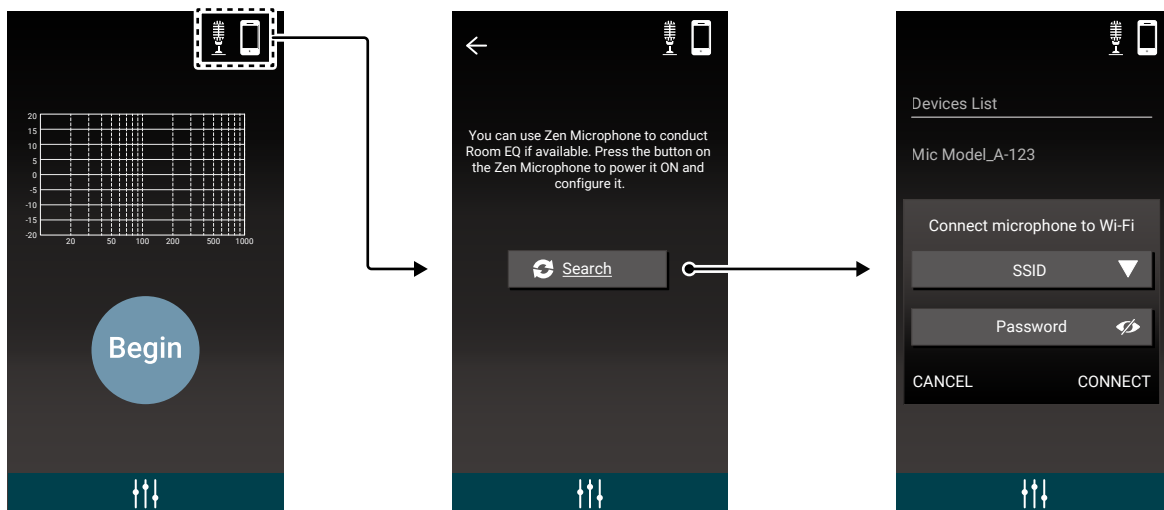


Setting the measurement microphone

Using Onkyo Room EQ, connect the measurement microphone to Wi-Fi.

Preparation

- Charge the measurement microphone beforehand.
 - First, search for the measurement microphone using the Bluetooth function. Turn on the Bluetooth function of the mobile device.
1. Tap the microphone switching icon on the app screen.
 2. Turn on the power of the microphone.
 3. Tap "Search" to search for the microphone.
 4. When the microphone is found, the Wi-Fi connection guidance is displayed. Select the wireless LAN router, and enter the password.
 - When the microphone is connected to the network, information for update may be displayed. In this case, execute update.



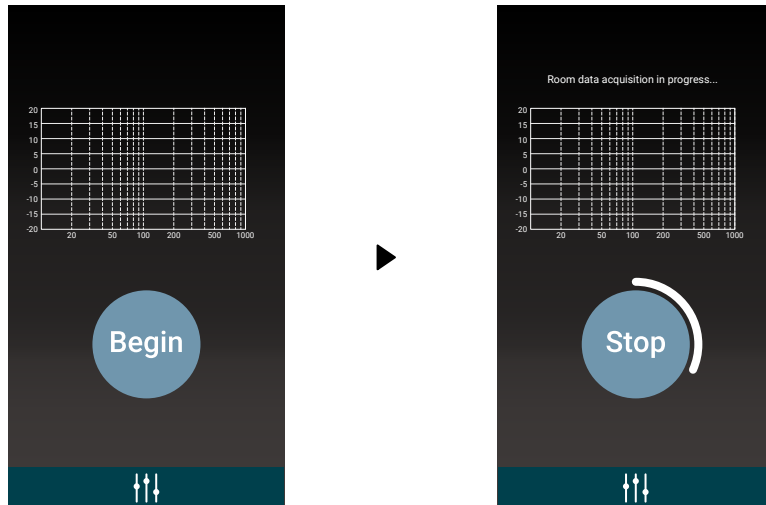
Before starting measurement

- Enter natural roll-off frequency. Move around the room with the microphone(or phone). Move the microphone in different heights. Cover the entire room.
- Stand 1 .5 meters or more away from the speakers for optimal measurements of the room.
- Do not get in between the microphone and the speakers, as this affects the measurements.
- Continue movement around the room for approximately 60 seconds.
The test can be stopped after 10 seconds if the entire room has been covered.

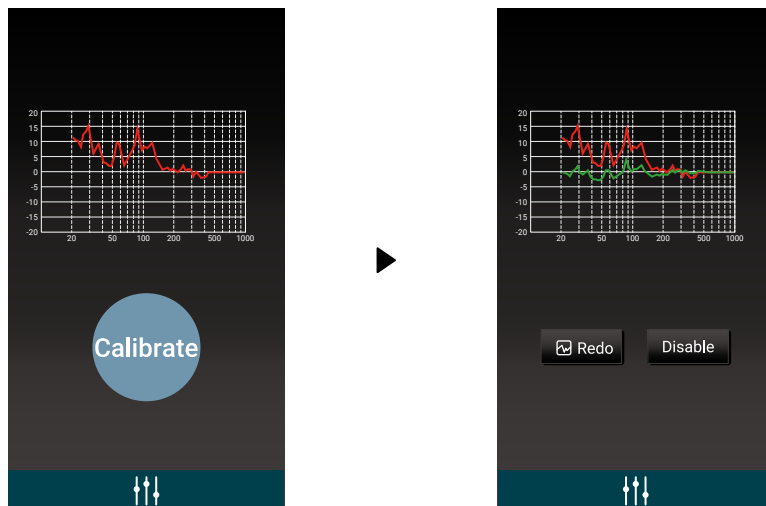
Measurement

1. Tap "Begin" to start the measurement.

The measurement will be complete in approx. one minute. So, move around in the room during measurement and pick up a sound using the mobile device or measurement microphone.



2. After the measurement is completed, tap "Calibrate" to calculate a correction value of the sound.
3. Set whether to redo measurement or enable/disable Room EQ.
Redo: Returns to step 1, and make a measurement again.
Enable/Disable: Set Room EQ to Enable/Disable. This setting can also be made on the setup menu of the main unit.
4. Tap "Finished" to complete the settings.



Supported Models and Update History

Supported models

As of January 2026

- Y-50
- Y-40

Update history

As of now, no information is available. Updated information related to an added or changed function will be notified as needed when released.



O N K Y O